

# 2008-09 Saint Francis

## RED FLASH MEN'S BASKETBALL

### RED FLASH SCOREBOARD

DATE	OPPONENT	TIME
Nov. 14	at Texas Tech	L, 81-47
Nov. 17	at American	L, 67-46
<b>NOV. 20</b>	<b>DUQUESNE</b>	<b>7 P.M.</b>
<b>NOV. 22</b>	<b>BUCKNELL</b>	<b>8 P.M.</b>
Nov. 24	at Lehigh	7 p.m.
Nov. 29	at Youngstown State	7:05 p.m.
Dec. 1	at Morgan State	7 p.m.
<b>DEC. 4</b>	<b>LONG ISLAND*</b>	<b>7 P.M.</b>
<b>DEC. 6</b>	<b>ST. FRANCIS-NY* (FSN-PITTSBURGH)</b>	<b>NOON</b>
Dec. 14	at Iona	7 p.m.
Dec. 17	at St. Bonaventure	7 p.m.
Dec. 31	at Vanderbilt	Noon
Jan. 3	at Robert Morris*	7 p.m.
Jan. 8	at Sacred Heart*	TBA
Jan. 10	at Quinnipiac*	TBA
<b>JAN. 15</b>	<b>WAGNER*</b>	<b>7 P.M.</b>
<b>JAN. 17</b>	<b>CCSU*</b>	<b>4 P.M.</b>
Jan. 22	at Fairleigh Dickinson*	TBA
Jan. 24	at St. Francis-NY* (FSN-Pittsburgh)	4 p.m.
<b>JAN. 29</b>	<b>MONMOUTH*</b>	<b>7 P.M.</b>
<b>JAN. 31</b>	<b>BRYANT</b>	<b>7 P.M.</b>
Feb. 5	at CCSU*	TBA
Feb. 7	at Wagner* (FSN-Pittsburgh)	4 p.m.
<b>FEB. 12</b>	<b>QUINNIPIAC*</b>	<b>7 P.M.</b>
<b>FEB. 14</b>	<b>SACRED HEART*</b>	<b>7 P.M.</b>
Feb. 19	at Long Island*	TBA
Feb. 21	at Mount St. Mary's*	7 p.m.
<b>FEB. 26</b>	<b>ROBERT MORRIS*</b>	<b>7 P.M.</b>
<b>FEB. 28</b>	<b>FAIRLEIGH DICKINSON*</b>	<b>7 P.M.</b>

Home Games in **BOLD & CAPS**

TV Coverage listed in ( )

\* indicates Northeast Conference game

All Times are Eastern

### Game 3

#### Duquesne (1-0) at SAINT FRANCIS (0-2)

Thursday, November 20, 2008 ♦ 7 p.m.

DeGol Arena (3,500) ♦ Loretto, Pa.

Radio: The EDGE 1400 AM (Loretto); 850 AM (Johnstown)

Webstream: www.goRedFlash.com and www.edge1400.com

Radio Crew: Joe Vesnesky and Bernie Jubeck



### Saint Francis University

Head Coach: Don Friday  
Alma Mater: Lebanon Valley, 1990  
At SFU: 0-2/1st Season  
Career: 83-61/6th Season

SFU PPG: 46.5  
OPP's PPG: 74.0  
FG Pct: 30.1  
FG Pct. Defense: 50.0



### Duquesne University

Head Coach: Ron Everhart  
Alma Mater: Virginia Tech, 1985  
At DU: 28-32/3rd Season  
Career: 202-204/15th Season

DU PPG: 84  
OPP's PPG: 55  
FG Pct: 52.6  
FG Pct. Defense: 35.3

⇒ **Next Up:** Saint Francis will make its 2008-09 debut at DeGol Arena with a 7 p.m. Thursday tilt against in-state rival Duquesne. The Red Flash played a pair of tough road games - at Big 12 opponent Texas Tech and defending Patriot League champion American - and are hoping to get back on track against a tough A-10 foe. SFU has been paced by senior Marquis Ford during the first two games. The fourth-year guard has averaged 9.0 ppg, 2.0 rpg, 2.5 apg and 2.0 spg. Junior Devin Sweetney has a team-high 13 rebounds, and has made 4-of-6 attempts from the charity stripe.

⇒ **Sizing Up The Dukes:** Duquesne finished 17-13 overall in 2007-08, and finished tied for ninth with a 7-9 record in the Atlantic 10. Head coach Ron Everhart lost three starters and seven veterans off of that club, but returns five lettermen and added eight new faces to the club. In the Dukes' 84-55 season-opening victory over High Point, Damian Saunders had a team-high 21 points and 6 steals.

### Saint Francis Projected Starters

No.	Name	Yr.	Pos.	Ht.	Wt.	PPG	RPG	APG	Last Game/Conf. Rank or Notes
15	Cale Nelson	Sr.	G	5-10	180	8.0	2.5	1.5	2nd on team with 8.0 ppg
3	Marquis Ford	Sr.	G	5-10	175	9.0	2.0	2.5	Leads team in ppg, apg and spg
1	Devin Sweetney	Jr.	F	6-6	180	8.0	6.5	0.5	Team-high 13 rebounds
54	Kurt Hoffman	Jr.	F	6-6	210	4.0	5.5	0.0	8 points, 7 rebs off bench at AU
13	Mislav Jukic	Jr.	F	6-7	220	7.0	6.0	1.0	Game-high 7 rebounds at AU

**TEAM INFORMATION**

Conference: .....Northeast  
 Home Court: .....DeGol Arena  
 .....in the Maurice Stokes Athletics Center  
 Capacity: .....3,500  
 2007-08 Record: .....6-23  
 2007-08 NEC Record / Finish: .....4-14, T8th  
 Letterwinners Returning / Lost: .....11 / 2  
 Starters Returning / Lost: .....3 / 2  
 Newcomers: .....2

**ATHLETIC COMMUNICATIONS**

Director / Men's Basketball Contact: ...Bob Volkert  
 .....PO Box 600  
 .....Loretto, Pa. 15940  
 E-mail: .....rvolkert@francis.edu  
 Office: .....814-472-3128  
 Cell (Media Use ONLY): .....814-330-6281  
 Fax: .....814-472-3196  
 Assistant Director: .....Ashley Bailey  
 Assistant Office: .....814-472-3916  
 Website: .....www.goRedFlash.com

**PROGRAM HISTORY**

First Season of Varsity Competition: .....1905-06  
 All-Time Basketball Record: .....868-928 (95 seasons)  
 Years in NCAA Tournament / Last: .....1 / 1990-91  
 Last Post-Season Opponent: .....Arizona  
 Result: .....Arizona 93, Saint Francis 80  
 NIT Years (record) / Last: .....3 (3-4) / 1957-58

**RADIO INFORMATION**

Radio Station: .....Red Flash Sports Radio Network  
 Flagship: .....The EDGE WWGE 1400 AM (Loretto)  
 Network: .....The EDGE WKGE 850 AM (Johnstown)  
 Listen on the Web: .....www.edge1400.com  
 Play-by-Play: .....Joe Vesnesky (30th season)  
 Color Commentator: .....Bernie Jubeck (6th season)

**MEDIA SERVICES****Don Friday Interviews**

Media members wishing to arrange an interview with head coach Don Friday are asked to contact Bob Volkert in the SFU Athletic Communications office. Times can be arranged before or after practice, but must be scheduled in advance.

**Player Interviews**

Media members wishing to arrange an interview with an SFU player must contact Bob Volkert in the SFU Athletic Communications office. It is asked that at least 48 hours prior notice is given in order to arrange the interview, and it must occur in a fashion that does not interfere with the student-athlete's academic schedule.

**Post-Game Interviews**

The SFU locker room is closed to the media.

During games at DeGol Arena, a member of the SFU Athletic Communications office will collect player interview requests towards the end of the second half. Following the NCAA's recommended cooling-off period, head coach Don Friday and SFU players will address the media in the post-game media room.

On the road, interviews will be conducted outside the locker room unless an interview area is provided.

**COACHING STAFF**

**Head Coach:** Don Friday (Lebanon Valley, '90) - 1st Season  
**Assistant Coach:** Abe Badmus (Bucknell, '07) - 1st Season  
**Assistant Coach:** Doug Kraft (Millersville, '89) - 1st Season  
**Assistant Coach:** Rob Krimmel (Saint Francis '00) -9th Season  
**Head Graduate Manager:** David Marshall (Susquehanna, '08) 1st Season

**Duquesne Projected Starters**

No.	Name	Yr.	Pos.	Ht.	Wt.	PPG	RPG	APG	Last Game/Conf. Rank or Notes
1	Aaron Jackson	Sr.	G	6-4	185	9.0	4.0	3.5	14 pt, 6 reb, 7 asst at High Point
13	Jason Duty	Jr.	G	6-1	175	2.3	0.9	0.6	6 pts, 6 rebs at High Point
25	Damian Saunders	So.	F	6-7	210	6.5	5.2	1.6	2007-08 A-10 All-Rookie Team
30	Bill Clark	So.	G/F	6-5	205	8.2	4.3	1.4	Played in all 30 games as freshman
32	B.J. Monteiro	Fr.	G/F	6-5	195	-	-	-	7 pts, 4 rebs in college debut

\*Stats from 2007-08

⇒ **The Series:** Duquesne has a 59-12 lead in the all-time series with Saint Francis, which began during the 1913-14 season. The Dukes have won the last eight meetings, including a 72-71 contest on a 3-point shot at the buzzer, two years ago at DeGol Arena.

⇒ **Looking Ahead:** Saint Francis won't have much time to reflect over the next five days as the game against Duquesne is followed by a Saturday game against another in-state rival, Bucknell, at DeGol Arena. The Red Flash will close out November with games at Lehigh (Nov. 24) and Youngstown State (Nov. 29). The Red Flash will play a total of six games in November.

**We're Going Streaking:** Junior Devin Sweetney has played in, and started, 60 consecutive games for the Red Flash. It is the longest such streak for Saint Francis. Senior Cale Nelson has also played in 60 straight games, and has started the last 36.

⇒ **On The Tube:** Saint Francis will appear on regional television three times this season, including once at home in the comfort of DeGol Arena. The Red Flash will play host to St. Francis-NY on Saturday, Dec. 6, in a contest that will be televised live on MSG Network at Noon. The game will be televised to a tape delayed audience on FSN-Pittsburgh later that evening at 8 p.m.

Saint Francis versus St. Francis-NY will again be televised on the same two stations play in Brooklyn, New York, on Jan. 24. That contest will broadcast live on both MSG and FSN-Pittsburgh at 4 p.m.

Saint Francis' final televised game of the season will be on Feb. 7 at Wagner. The game will air live on MSG at 4 p.m. that day, while it will be shown on tape delay at 9 p.m. on Feb. 9, on FSN-Pittsburgh.

⇒ **Same Names, New Numbers:** Several Red Flash returnees will be sporting new numbers this season. Marquis Ford switched from No. 11 to No. 3; Kurt Hoffman changed from No. 45 to his old high school No. 54; Mislav Jukic changed his number from 35 to 13; Chris McFarland will wear No. 2 in lieu of No. 20; and Randy Spaid will now wear No. 21 instead of No. 40.

⇒ **Preseason Polls:** The Red Flash were selected by Northeast Conference coaches to finish 11th in the league in 2008-09. Saint Francis completed last season in a four-way tie for eighth place, just one game out of an NEC Tournament berth. The Red Flash are looking to make the NEC Tournament for the first time since 2004-05.

⇒ **New Faces:** Junior Cedric Latimer and freshman Curtis Keys are new faces on the Red Flash roster this season. However, neither player will participate in 2008-09. Latimer, a transfer from Santa Clara, will sit out in compliance with NCAA transfer rules. Keys will take the year off to concentrate on academics.

⇒ **Joe Vesnesky Returns:** Long-time "Voice" of the Red Flash, Joe Vesnesky, returns for his 30th season in Loretto. Don Friday will be the sixth Saint Francis head coach in which he will cover, and he will cover SFU athletics under his sixth U.S President. Vesnesky's partner, Bernie Jubeck, will be the color commentator at all home games, and select road games.

⇒ **Tickets For Games at DeGol Arena:** Tickets for basketball games held at DeGol Arena can be purchased by calling 814-472-3286. General admission tickets are \$7.00 for adults, and \$4.00 for students/children (12 and under). Season ticket prices are as follows: Reserved chairback seats \$100; General Admission Adult \$65; General Admission Student/Children \$40.

⇒ **Alumni Night:** Saint Francis' annual Alumni Night has become a major attraction for former players, students and fans alike. The Red Flash will once again host an Alumni Night in 2008-09, with this year's event being held on Nov. 22, against Bucnell. It will mark a very busy day on campus as Saint Francis athletics will host a football game against Bryant at 1 p.m., a women's basketball game against Lehigh at 5 p.m., and then the men's basketball game against the Bison at 8 p.m.

⇒ **Schedule Changes:** In case you missed it, Saint Francis' contest vs. Duquesne has been changed from Dec. 19 to a 7 p.m. start on Thurs., Dec. 20, at DeGol Arena. Also, the Red Flash game versus CCSU on Jan. 17 has been moved from 7 p.m. to 4 p.m.

BY ELIGIBILITY	
<b>Seniors (5):</b>	Marquis Ford; Kyle Jackson; Cale Nelson; Steve Profeta; Grant Surprenant
<b>Juniors (5):</b>	Kurt Hoffman; Mislav Jukic; Cedric Latimer; Chris McFarland; Randy Spaid; Devin Sweetney
<b>Sophomores (1):</b>	Sorena Orandi
<b>Freshmen (1):</b>	Curtis Keys

PRONUNCIATIONS	
Marquis Ford	Mar-KEECE Ford
Mislav Jukic	MEE-slav U-kick
Sorena Orandi	So-RAH-nah O-REN-day
Steve Profeta	Pro-FET-ah
Grant Surprenant	Su-PURR-not

## 2008 - 09 SFU NUMERICAL ROSTER

NO.	NAME	YR.	POS.	HT.	WT.	HOMETOWN / HIGH SCHOOL
1	Devin Sweetney**	Jr.	G/F	6-6	180	Washington, D.C. / Riverdale Baptist
2	Chris McFarland**	Jr.	G	6-0	180	Montgomery Village, Md. / Riverdale Baptist
3	Marquis Ford***	Sr.	G	5-10	175	St. Petersburg, Fla. / St. Petersburg
5	Curtis Keys	Fr.	G	6-2	170	Reston, Va. / South Lakes
13	Mislav Jukic**	Jr.	F	6-7	220	Zagreb, Croatia / Life Center Academy (NJ)
14	Sorena Orandi*	So.	G	6-1	180	Vastra Frolunda, Sweden / Solebury Prep
15	Cale Nelson***	Sr.	G	5-10	180	Newville, Pa. / Big Spring
21	Randy Spaid**	Jr.	F/C	6-8	200	Portage, Pa. / Portage
30	Grant Surprenant***	Sr.	G	6-5	180	Palatine, Ill. / Palatine
33	Kyle Jackson**	Sr.	G	6-3	175	Bolingbrook, Ill. / Plainfield Central
40	Cedric Latimer	Jr.	F	6-6	220	Los Angeles, Calif. / Windward
43	Steve Profeta***	Sr.	G	6-5	180	Carnegie, Pa. / Chartiers Valley
54	Kurt Hoffman**	Jr.	F	6-6	210	Johnstown, Pa. / Greater Johnstown

Saint Francis / Duquesne Statistical Comparison

STATISTIC	SFU	DUQ
Record	0-2	1-0
RPI	n/a	n/a
Scoring Offense	46.5	84.0
Scoring Defense	74.0	55.0
Scoring Margin	-27.5	+29.0
Free Throw Percentage	.826	.640
Field Goal Percentage	.301	.526
Field Goal Percentage Defense	.500	.353
3-Point Field Goal Percentage	.324	.381
3-Point Field Goal Percentage Defense	.405	.364
Rebounding Offense	33.5	42.0
Rebounding Defense	32.5	24.0
Rebounding Margin	+1.0	+18.0
Blocked Shots	1.0	4.0
Assists	7.5	21.0
Steals	5.5	13.0

⇒ **Bettwy Creative Artwork:** Saint Francis Athletics and Bettwy Creative Studio are teaming up in 2008-09 to bring Red Flash fans personalized artwork into their homes and offices. Bill Bettwy will attend various games throughout the year, beginning with the Nov. 22 game against Bucknell. Bring photos or digital images, or have Bill take photos on site, to have them blown up on a large color poster. More details will be available as the season progresses.

⇒ **Rim Rally:** The first annual Rim Rally was held at DeGol Arena on Friday, October 17, with a crowd estimated at 700 in attendance. Fans were treated to free snacks, music, fan/team contests, and a preseason message from college basketball analyst Dick Vitale. The event also included a Faculty vs. Greek Life basketball game, and introductions of both the Red Flash men's and women's basketball teams.

⇒ **Collections for Kids:** The Saint Francis Softball team is currently collecting items for the Children's Home of Pittsburgh and Mario Lemieux Family Center. The facility is located in Lawrenceville just down the street from the new Children's Hospital that is being built. The organization is non-profit depends upon donations to offer assistance to its families. The facility offers transitional care for infants and children, day care for medically fragile children, adoption services, and living space for families so that they may spend time with their children. To lend a helping

hand, we are including as many people across campus and beyond to collect as many items as possible. Every little bit helps! The Softball team will be collecting items and donations for this project on Saturday, November 22, 2008 at the football game, as well as the home men's and women's basketball games, at DeGol Arena.

⇒ **All-American Success:** Saint Francis has long been known for its reputation as a top university around the country, but it is not widely known that 33 current or former student-athletes have been honored for their success in and out of the classroom. SFU has had 33 all-time *ESPN The Magazine* Academic All-Americans, as voted on by members of CoSIDA. Saint Francis had three student-athletes receive the prestigious honor in 2007-08. The Red Flash men's basketball team has had five *ESPN The Magazine* Academic All-Americans, including current assistant coach Rob Krimmel and former Dallas Maverick Mike Iuzzolino, who were both two-time honorees. Iuzzolino was the *ESPN The Magazine* Academic All-American of the Year in 1991.

RED FLASH WHEN...		
<b>SFU RECORD BY STARTING LINEUP</b>		
Ford, Hoffman, Nelson, Spaid, Sweetney,		0-1
Ford, Jukic, Nelson, Profeta, Sweetney		0-1
<b>SFU DOUBLE-FIGURE GAMES</b>		
<b>Points</b>		
Ford (1), Jukic (1), Sweetney (1)		
<b>Rebounds</b>		
n/a		
<b>Double-Doubles</b>		
n/a		
<b>Saint Francis Record...</b>		
At home	0-0	0-0
On road	0-2	0-0
Leading or tied at halftime	0-0	0-0
Trailing at halftime	0-2	0-0
Shoot 50% or higher	0-0	0-0
Shoot less than 50%	0-2	0-0
Shoot higher % than opponent	0-0	0-0
Shoot lower % than opponent	0-2	0-0
Opp. shoot worse than 50%	0-1	0-0
Opp. shoot 50% or higher	0-1	0-0
Score less than 60 points	0-2	0-0
Score 60-70 points	0-0	0-0
Score 71-80 points	0-0	0-0
Score 81-90 points	0-0	0-0
Score 91-plus points	0-0	0-0
Opp. score 50 points or less	0-0	0-0
Opp. score 51-60 points	0-0	0-0
Opp. score 61-70 points	0-1	0-0
Opp. score 71-80 points	0-0	0-0
Opp. score 81-90 points	0-1	0-0
Opp. score 91-plus points	0-0	0-0
Outrebound opponent	0-1	0-0
Outrebounded by opponent	0-1	0-0
Equal number of rebounds	0-0	0-0
Commit fewer turnovers than opp.	0-0	0-0
Commit same turnovers as opp.	0-0	0-0
Commit more turnovers than opp.	0-2	0-0
Make 8 or more 3-pointers	0-0	0-0
Make 7 or fewer 3-pointers	0-2	0-0
Games decided by 3 or fewer points	0-0	0-0
Game decided by 4-10 points	0-0	0-0
Overtime games	0-0	0-0
On Television	0-1	0-0
Games vs. ranked opp.	0-0	0-0
Games following a loss	0-1	0-0
Games following a win	0-0	0-0
More points in paint than opp.	0-0	0-0
Fewer or same points in paint	0-2	0-0
More bench points than opp.	0-1	0-0
Fewer or same bench points than opp.	0-1	0-0
More 2nd chance points than opp.	0-1	0-0
Fewer or same 2nd chance points	0-1	0-0
On Sunday	0-0	0-0
On Monday	0-1	0-0
On Tuesday	0-0	0-0
On Wednesday	0-0	0-0
On Thursday	0-0	0-0
On Friday	0-1	0-0
On Saturday	0-0	0-0
Day Games	0-0	0-0
Night Games (5 p.m. or later start)	0-2	0-0

**Saint Francis Records Watch**

**SAINT FRANCIS 1,000-POINT SCORERS**

1. Joe Anderson (87-91) .....	2,301
2. Maurice Stokes (51-55) .....	2,282
3. Jeff Hamilton (81-85) .....	1,810
4. Kevin Porter (68-72) .....	1,766
5. Darshan Luckey (02-05) .....	1,699
6. Sandy Williams (61-64) .....	1,546
7. Harkeem Dixon (87-90, 92) .....	1,458
8. Greg Jacobs (83-87) .....	1,457
9. Norm Van Lier (66-69) .....	1,410
10. Frank Puschauer (53-57) .....	1,371
11. Wilbur Trosch (57-60) .....	1,361
12. Nick Leasure (75-79) .....	1,360
13. Len Murray (64-68) .....	1,323
14. Mike Iuzzolino (89-91) .....	1,346
15. Larry Lewis (66-69) .....	1,293
16. John Hilvert (87-91) .....	1,292
17. Deon George (90-94) .....	1,288
18. Eric Taylor (94-98) .....	1,287
19. Charlie Kates (77-81) .....	1,213
20. Joe Hazinsky (68-72) .....	1,187
21. Calvin Fowler (59-62) .....	1,179
22. Clarence Hopson (71-74) .....	1,148
23. Jim McClellan (54-58) .....	1,140
24. Terrence Martin (93-97) .....	1,130
25. Joe Aston (57-60) .....	1,128
26. John Bodner (48-52) .....	1,125
27. Bill Coyle (63-67) .....	1,097
28. Rob Wooster (92-96) .....	1,085
29. Joe Schoen (77-81) .....	1,076
30. Bill Wanish (48-51) .....	1,064
31. Ed Winters (59-62) .....	1,063
32. Napoleon Lightning (81-85) .....	1,060
33. Rahsaan Benton (01-06) .....	1,045
34. Bob Convey (77-81) .....	1,036
35. Jason Roberts (92-96) .....	1,017
35. Bob Nichols (72-76) .....	1,017
37. Ed W. Dugan (50-54) .....	1,003

**CURRENT PLAYERS CAREER POINTS**

Devin Sweetney (2006-present) .....	698
Cale Nelson (2004-present) .....	584
Marquis Ford (2005-present) .....	574
Grant Surprenant (2005-present) .....	438
Steve Profeta (2005-present) .....	250
Mislav Jukic (2006-present) .....	101
Kurt Hoffman (2006-present) .....	99
Chris McFarland (2006-present) .....	52
Kyle Jackson (2006-present) .....	35
Sorena Orandi (2007-present) .....	34
Randy Spaid (2006-present) .....	20

**SAINT FRANCIS ALL-TIME REBOUNDING LEADERS**

1. *Maurice Stokes (51-55) .....	1,819
2. Larry Lewis (66-69) .....	1,324
3. Jim McClellan (54-58) .....	1,002
4. Eric Taylor (94-98) .....	967
5. Joe Schoen (77-81) .....	942
6. Wilbur Trosch (57-60) .....	875
7. Sandy Williams (61-64) .....	833
8. Joe Aston (57-60) .....	831
9. Mike Copeland (68-71) .....	830
10. Don Falenski (55-59) .....	797
11. Norm Van Lier (66-69) .....	769
12. Frank Puschauer (53-57) .....	713
13. Jeff Hamilton (81-85) .....	711
14. Joe Anderson (87-91) .....	666
15. Charlie Kates (77-81) .....	665
16. William Saller (52-56) .....	653

\* - Does not include Stokes' freshman year because rebounding statistics were not kept until 1952-53.

**CURRENT PLAYERS CAREER REBOUNDS**

Devin Sweetney (2006-present) .....	380
Marquis Ford (2005-present) .....	197
Cale Nelson (2004-present) .....	126
Steve Profeta (2005-present) .....	118
Kurt Hoffman (2006-present) .....	116
Grant Surprenant (2005-present) .....	100
Mislav Jukic (2006-present) .....	56
Kyle Jackson (2006-present) .....	36
Chris McFarland (2006-present) .....	33
Sorena Orandi (2007-present) .....	12
Randy Spaid (2006-present) .....	8

**SAINT FRANCIS ALL-TIME ASSISTS LEADERS**

1. Napoleon Lightning (81-85) .....	589
2. Jamal Ragland (97-01) .....	488
3. Bob Convey (77-81) .....	440
3. Greg Jacobs (83-87) .....	440
5. Jack Phelan (73-77) .....	353
6. Garrett Farha (04-06) .....	323
6. Don Graham (75-79) .....	323

**CURRENT PLAYERS CAREER ASSISTS**

Marquis Ford (2005-present) .....	237
Cale Nelson (2004-present) .....	237
Devin Sweetney (2006-present) .....	100
Steve Profeta (2005-present) .....	59
Grant Surprenant (2005-present) .....	40
Chris McFarland (2006-present) .....	29
Kurt Hoffman (2006-present) .....	22
Mislav Jukic (2006-present) .....	11
Sorena Orandi (2007-present) .....	10
Kyle Jackson (2006-present) .....	7
Randy Spaid (2006-present) .....	1

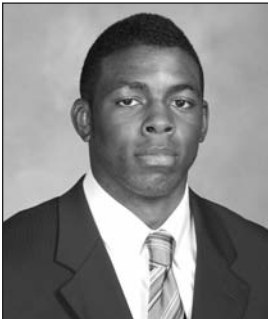
**SAINT FRANCIS ALL-TIME BLOCKS LEADERS**

1. Melvin Scott (1996-01) .....	137
2. Jerry Mack (1985-89) .....	109
3. Emmanuel Adekunle (1994-98) .....	105
4. Lou Schmitt (1980-84) .....	77
5. Reggie Lewis (1989-94) .....	74
6. Jason Osborne (2001-05) .....	71
7. Tom Bennetch (1987-91) .....	61
8. Jelani Lawrence (2005-07) .....	59
8. Mike Fink (1989-92) .....	59
10. Bassirou Dieng (2006-present) .....	58
11. Jeff Hamilton (1981-85) .....	52

**CURRENT PLAYERS CAREER BLOCKS**

Devin Sweetney (2006-present) .....	19
Kurt Hoffman (2006-present) .....	15
Steve Profeta (2005-present) .....	12
Grant Surprenant (2005-present) .....	7
Mislav Jukic (2006-present) .....	6
Marquis Ford (2005-present) .....	4
Kyle Jackson (2006-present) .....	2
Chris McFarland (2006-present) .....	2
Cale Nelson (2004-present) .....	1
Randy Spaid (2006-present) .....	1
Sorena Orandi (2007-present) .....	0

#1 DEVIN SWEETNEY



2008-09 Notes:

- ▶ Needs two more points to reach 700 for his career
- ▶ Has played, and started, 60 consecutive games
- ▶ Had 9 rebounds in just 25 minutes at Texas Tech

2007-08 Notes:

- ▶ Finished 3rd on team in scoring
- ▶ Started all 29 games
- ▶ Second on team with 26 steals

1

6-6 ♦ 180

Junior

Washington, D.C.  
(Riverdale Baptist)

2008-09 SWEETNEY GAME-BY-GAME

Opponent	Min.	FG-A	Pct.	3FG-A	Pct.	FT-A	Pct.	O-D-TR	PF	A	TO	BS	ST	Pts
at Texas Tech (11/14)	25	3-11	.273	2-4	.500	3-4	.750	2-7-9	3	1	4	0	1	11
at American (11/17)	32	2-12	.167	0-5	.000	1-2	.500	1-3-4	1	0	4	0	0	5
DUQUESNE (11/20)														
BUCKNELL (11/22)														
at Lehigh (11/24)														
at YSU (11/29)														
at Morgan State (12/1)														
LONG ISLAND* (12/4)														
ST. FRANCIS-NY* (12/6)														
at Iona (12/14)														
at St. Bonaventure (12/17)														
at Vanderbilt (12/31)														
at Robert Morris* (1/3)														
at Sacred Heart* (1/8)														
at Quinnipiac* (1/10)														
WAGNER* (1/15)														
CCSU* (1/17)														
at FDU* (1/22)														
at St. Francis-NY* (1/24)														
MONMOUTH* (1/29)														
BRYANT (1/31)														
at CCSU* (2/5)														
at Wagner* (2/7)														
QUINNIPIAC* (2/12)														
SACRED HEART* (2/14)														
at Long Island* (2/19)														
at Mount* (2/21)														
RMU* (2/26)														
FDU* (2/28)														

Season/Career Highs

POINTS

Season - 11 at Texas Tech (11/14)  
Career - 22, twice

REBOUNDS

Season - 9 at Texas Tech (11/14)  
Career - 13, at Monmouth (1/25/07)

FIELD GOALS

Season - 3 at Texas Tech (11/14)  
Career - 8, three times

FIELD GOAL ATTEMPTS

Season - 12 at American (11/17)  
Career - 17, vs. SFC (1/24/08)

3-POINT FIELD GOALS

Season - 2 at Texas Tech (11/14)  
Career - 3, twice

3-POINT FIELD GOAL ATTEMPTS

Season - 5 at American (11/17)  
Career - 5, twice

FREE THROWS

Season - 3 at Texas Tech (11/14)  
Career - 13 at Robert Morris (12/8/07)

FREE THROW ATTEMPTS

Season - 4 at Texas Tech (11/14)  
Career - 14 at Robert Morris (12/8/07)

ASSISTS

Season - 0  
Career - 5, three times

STEALS

Season - 1 at Texas Tech (11/14)  
Career - 6, at Robert Morris (12/8/07)

BLOCKED SHOTS

Season - 0  
Career - 2, twice

MINUTES PLAYED

Season - 32 at American (11/17)  
Career - 49, vs. SFC (1/24/08)

Miscellaneous

Category	2008-09	Career
Games led SFU in scoring	1	0
10+ rebound games	0	0
10+ scoring games	1	0
20+ scoring games	0	0
30+ scoring games	0	0
Double-doubles	0	0
Games led SFU in rebounds	1	0
Games led SFU in assists	0	0
Games led SFU in blocks	0	0
Games led SFU in steals	0	0

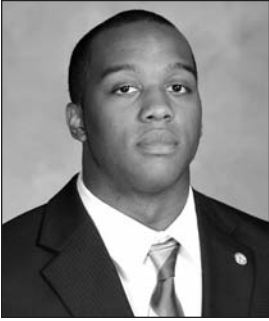
SWEETNEY'S CAREER STATS

Season	G-GS	FG-A	Pct.	3PT-A	Pct.	FT-A	Pct.	Pts-Avg.	Rebs-Avg.	A	TO	BL	ST	Min
2008-09	2-2	5-23	.217	2-9	.222	4-6	.667	16-8.0	13-6.5	1	8	0	1	57
2007-08	29-29	103-261	.395	17-71	.239	83-107	.776	306-10.6	145-5.0	39	89	11	26	972
2006-07	29-29	119-274	.434	17-65	.262	121-145	.834	376-13.0	222-7.7	60	90	8	31	976
<b>Totals</b>	<b>60-60</b>	<b>227-558</b>	<b>.407</b>	<b>36-145</b>	<b>.248</b>	<b>208-258</b>	<b>.806</b>	<b>698-11.6</b>	<b>380-6.3</b>	<b>100</b>	<b>187</b>	<b>19</b>	<b>58</b>	<b>2005</b>

SWEETNEY'S CAREER NORTHEAST CONFERENCE STATS

Season	G-GS	FG-A	Pct.	3PT-A	Pct.	FT-A	Pct.	Pts-Avg.	Rebs-Avg.	A	TO	BL	ST	Min
2008-09	n/a													
2007-08	18-18	60-157	.382	7-44	.159	64-80	.800	191-10.6	92-5.1	29	58	4	18	624
2006-07	18-18	75-171	.439	13-41	.317	65-80	.813	228-12.7	143-7.9	39	53	5	20	629
<b>Totals</b>	<b>36-36</b>	<b>135-328</b>	<b>.412</b>	<b>20-85</b>	<b>.235</b>	<b>129-160</b>	<b>.806</b>	<b>419-11.6</b>	<b>235-6.5</b>	<b>68</b>	<b>111</b>	<b>9</b>	<b>38</b>	<b>1253</b>

#2 CHRIS MCFARLAND



2008-09 Notes:

- ▶ Has scored two points in each of the first two games
- ▶ Has played in 22 of the last 23 games

2007-08 Notes:

- ▶ Had career highs in points, rebounds, assists and steals

2

6-0 ♦ 180

Junior

Montgomery Village, Md.  
(Riverdale Baptist)

2008-09 MCFARLAND GAME-BY-GAME

Opponent	Min.	FG-A	Pct.	3FG-A	Pct.	FT-A	Pct.	O-D-TR	PF	A	TO	BS	ST	Pts
at Texas Tech (11/14)	10	1-1	1.000	0-0	.000	0-0	.000	2-1-3	3	0	3	0	1	2
at American (11/17)	12	1-3	.333	0-0	.000	0-0	.000	0-1-1	1	0	1	0	0	2
DUQUESNE (11/20)														
BUCKNELL (11/22)														
at Lehigh (11/24)														
at YSU (11/29)														
at Morgan State (12/1)														
LONG ISLAND* (12/4)														
ST. FRANCIS-NY* (12/6)														
at Iona (12/14)														
at St. Bonaventure (12/17)														
at Vanderbilt (12/31)														
at Robert Morris* (1/3)														
at Sacred Heart* (1/8)														
at Quinnipiac* (1/10)														
WAGNER* (1/15)														
CCSU* (1/17)														
at FDU* (1/22)														
at St. Francis-NY* (1/24)														
MONMOUTH* (1/29)														
BRYANT (1/31)														
at CCSU* (2/5)														
at Wagner* (2/7)														
QUINNIPIAC* (2/12)														
SACRED HEART* (2/14)														
at Long Island* (2/19)														
at Mount* (2/21)														
RMU* (2/26)														
FDU* (2/28)														

**Season/Career Highs**

**POINTS**  
 Season - 2, twice  
 Career - 6 at Sacred Heart (2/16/08)

**REBOUNDS**  
 Season - 3 at Texas Tech (11/14)  
 Career - 5 vs. Monmouth (1/5/08)

**FIELD GOALS**  
 Season - 1, twice  
 Career - 2, three times

**FIELD GOAL ATTEMPTS**  
 Season - 3 at American (11/17)  
 Career - 5 vs. Quinnipiac (1/3/08)

**3-POINT FIELD GOALS**  
 Season - 0  
 Career - 1 vs. Quinnipiac (1/3/08)

**3-POINT FIELD GOAL ATTEMPTS**  
 Season - 0  
 Career - 2 vs. Quinnipiac (1/3/08)

**FREE THROWS**  
 Season - 0  
 Career - 6 at Sacred Heart (2/16/08)

**FREE THROW ATTEMPTS**  
 Season - 0  
 Career - 8 vs. FDU (2/9/08)

**ASSISTS**  
 Season - 0  
 Career - 5 vs. Lock Haven (11/18/06)

**STEALS**  
 Season - 1 at Texas Tech (11/14)  
 Career - 3 vs. Quinnipiac (1/3/08)

**BLOCKED SHOTS**  
 Season - 0  
 Career - 1, twice

**MINUTES PLAYED**  
 Season - 12 at American (11/17)  
 Career - 24, twice

Miscellaneous

Category	2008-09	Career
Games led SFU in scoring	0	0
10+ rebound games	0	0
10+ scoring games	0	0
20+ scoring games	0	0
30+ scoring games	0	0
Double-doubles	0	0
Games led SFU in rebounds	0	0
Games led SFU in assists	0	0
Games led SFU in blocks	0	0
Games led SFU in steals	0	0

MCFARLAND'S CAREER STATS

Season	G-GS	FG-A	Pct.	3PT-A	Pct.	FT-A	Pct.	Pts-Avg.	Rebs-Avg.	A	TO	BL	ST	Min
2008-09	2-0	2-4	.500	0-0	.000	0-0	.000	4-2.0	4-2.0	0	4	0	1	22
2007-08	22-1	8-21	.381	1-4	.250	17-25	.680	34-1.5	21-1.0	20	19	0	9	227
2006-07	26-0	5-14	.357	0-3	.000	4-6	.667	14-0.5	8-0.3	9	15	2	4	149
<b>Totals</b>	<b>50-1</b>	<b>15-39</b>	<b>.385</b>	<b>1-7</b>	<b>.143</b>	<b>21-31</b>	<b>.677</b>	<b>52-1.0</b>	<b>33-0.7</b>	<b>29</b>	<b>38</b>	<b>2</b>	<b>14</b>	<b>398</b>

MCFARLAND'S CAREER NORTHEAST CONFERENCE STATS

Season	G-GS	FG-A	Pct.	3PT-A	Pct.	FT-A	Pct.	Pts-Avg.	Rebs-Avg.	A	TO	BL	ST	Min
2008-09	n/a													
2007-08	16-1	4-15	.267	1-4	.250	14-19	.737	23-1.4	13-0.8	11	15	0	9	178
2006-07	16-0	2-6	.333	0-2	.000	2-4	.500	6-0.4	4-0.3	2	2	1	2	72
<b>Totals</b>	<b>32-1</b>	<b>6-21</b>	<b>.286</b>	<b>1-6</b>	<b>.167</b>	<b>16-23</b>	<b>.696</b>	<b>29-0.9</b>	<b>17-0.5</b>	<b>13</b>	<b>17</b>	<b>1</b>	<b>11</b>	<b>250</b>

#3 MARQUIS FORD



2008-09 Notes:

- ▶ Has paced SFU in assists in each game this season
- ▶ Voted a team tri-captain

2007-08 Notes:

- ▶ Was 30-of-38 (.789) from the charity stripe

3

5-10 ♦ 175

Senior

St. Petersburg, Fla.  
(St. Petersburg)

Season/Career Highs

POINTS

Season - 11 at Texas Tech (11/14)  
Career - 18 vs. SFC (12/7/06)

REBOUNDS

Season - 3 at American (11/17)  
Career - 7, three times

FIELD GOALS

Season - 3 at American (11/17)  
Career - 7, twice

FIELD GOAL ATTEMPTS

Season - 7 at American (11/17)  
Career - 13, twice

3-POINT FIELD GOALS

Season - 2 at Texas Tech (11/14)  
Career - 5 vs. FDU (1/26/06)

3-POINT FIELD GOAL ATTEMPTS

Season - 4 at Texas Tech (11/14)  
Career - 9 at American (1/2/07)

FREE THROWS

Season - 5 at Texas Tech (11/14)  
Career - 6, two times

FREE THROW ATTEMPTS

Season - 6 at Texas Tech (11/14)  
Career - 7 vs. Monmouth (2/26/07)

ASSISTS

Season - 3 at American (11/17)  
Career - 5 vs. FDU (1/26/06)

STEALS

Season - 2, twice  
Career - 4 at SFC (2/14/08)

BLOCKED SHOTS

Season - 0  
Career - 1, four times

MINUTES PLAYED

Season - 31 at American (11/17)  
Career - 41 vs. SFC (1/24/08)

Miscellaneous

Category	2008-09	Career
Games led SFU in scoring	1	0
10+ rebound games	0	0
10+ scoring games	1	0
20+ scoring games	0	0
30+ scoring games	0	0
Double-doubles	0	0
Games led SFU in rebounds	0	0
Games led SFU in assists	2	0
Games led SFU in blocks	0	0
Games led SFU in steals	2	0

2008-09 FORD GAME-BY-GAME

Opponent	Min.	FG-A	Pct.	3FG-A	Pct.	FT-A	Pct.	O-D-TR	PF	A	TO	BS	ST	Pts
at Texas Tech (11/14)	27	2-5	.400	2-4	.500	5-6	.833	0-1-1	0	2	3	0	2	11
at American (11/17)	31	3-7	.429	1-2	.500	0-0	.000	2-1-3	0	3	2	0	2	7
DUQUESNE (11/20)														
BUCKNELL (11/22)														
at Lehigh (11/24)														
at YSU (11/29)														
at Morgan State (12/1)														
LONG ISLAND* (12/4)														
ST. FRANCIS-NY* (12/6)														
at Iona (12/14)														
at St. Bonaventure (12/17)														
at Vanderbilt (12/31)														
at Robert Morris* (1/3)														
at Sacred Heart* (1/8)														
at Quinnipiac* (1/10)														
WAGNER* (1/15)														
CCSU* (1/17)														
at FDU* (1/22)														
at St. Francis-NY* (1/24)														
MONMOUTH* (1/29)														
BRYANT (1/31)														
at CCSU* (2/5)														
at Wagner* (2/7)														
QUINNIPIAC* (2/12)														
SACRED HEART* (2/14)														
at Long Island* (2/19)														
at Mount* (2/21)														
RMU* (2/26)														
FDU* (2/28)														

FORD'S CAREER STATS

Season	G-GS	FG-A	Pct.	3PT-A	Pct.	FT-A	Pct.	Pts-Avg.	Rebs-Avg.	A	TO	BL	ST	Min
2008-09	2-2	5-12	.417	3-6	.500	5-6	.833	18-9.0	4-2.0	5	5	0	4	58
2007-08	28-13	47-150	.313	23-82	.280	30-38	.789	147-5.3	64-2.3	59	50	2	18	602
2006-07	24-24	70-163	.429	51-100	.510	32-48	.667	223-9.3	67-2.8	98	82	2	22	780
2005-06	27-14	60-162	.370	26-78	.333	40-63	.635	186-6.9	62-2.3	75	70	0	22	629
<b>Totals</b>	<b>81-53</b>	<b>182-487</b>	<b>.374</b>	<b>103-266</b>	<b>.387</b>	<b>107-155</b>	<b>.690</b>	<b>574-7.1</b>	<b>197-2.4</b>	<b>237</b>	<b>207</b>	<b>4</b>	<b>66</b>	<b>2069</b>

FORD'S CAREER NORTHEAST CONFERENCE STATS

Season	G-GS	FG-A	Pct.	3PT-A	Pct.	FT-A	Pct.	Pts-Avg.	Rebs-Avg.	A	TO	BL	ST	Min
2008-09	n/a													
2007-08	17-10	29-90	.322	14-51	.275	19-24	.792	91-5.4	42-2.5	29	30	1	13	375
2006-07	18-18	55-116	.474	41-74	.554	27-39	.692	178-9.9	47-2.6	72	57	1	17	592
2005-06	18-14	55-141	.390	24-66	.364	33-50	.660	167-9.3	54-3.0	64	60	0	20	539
<b>Totals</b>	<b>53-42</b>	<b>139-347</b>	<b>.401</b>	<b>79-191</b>	<b>.414</b>	<b>79-113</b>	<b>.699</b>	<b>436-8.2</b>	<b>143-2.7</b>	<b>165</b>	<b>147</b>	<b>2</b>	<b>50</b>	<b>1506</b>

## #13 MISLAV JUKIC



### 2008-09 Notes:

- ▶ Posted career high 10 points, and tied career high with 5 rebounds in season opener, at Texas Tech
- ▶ Had career high 7 rebounds and played career high 33 minutes at American

### 2007-08 Notes:

- ▶ Played in a career high 24 games

13

6-7 ♦ 220

Junior

Zagreb, Croatia

(Life Center Academy)

## 2008-09 JUKIC GAME-BY-GAME

Opponent	Min.	FG-A	Pct.	3FG-A	Pct.	FT-A	Pct.	O-D-TR	PF	A	TO	BS	ST	Pts
at Texas Tech (11/14)	20	4-10	.400	0-0	.000	2-2	1.000	1-4-5	2	0	1	1	1	10
at American (11/17)	33	1-10	.100	0-0	.000	2-2	1.000	3-4-7	3	2	3	1	0	4
DUQUESNE (11/20)														
BUCKNELL (11/22)														
at Lehigh (11/24)														
at YSU (11/29)														
at Morgan State (12/1)														
LONG ISLAND* (12/4)														
ST. FRANCIS-NY* (12/6)														
at Iona (12/14)														
at St. Bonaventure (12/17)														
at Vanderbilt (12/31)														
at Robert Morris* (1/3)														
at Sacred Heart* (1/8)														
at Quinnipiac* (1/10)														
WAGNER* (1/15)														
CCSU* (1/17)														
at FDU* (1/22)														
at St. Francis-NY* (1/24)														
MONMOUTH* (1/29)														
BRYANT (1/31)														
at CCSU* (2/5)														
at Wagner* (2/7)														
QUINNIPIAC* (2/12)														
SACRED HEART* (2/14)														
at Long Island* (2/19)														
at Mount* (2/21)														
RMU* (2/26)														
FDU* (2/28)														

### Season/Career Highs

#### POINTS

Season - 10 at Texas Tech (11/14)  
 Career - 10 at Texas Tech (11/14/08)

#### REBOUNDS

Season - 7 at American (11/17)  
 Career - 7 at American (11/17/08)

#### FIELD GOALS

Season - 4 at Texas Tech (11/14)  
 Career - 4, twice

#### FIELD GOAL ATTEMPTS

Season - 10, twice  
 Career - 10, twice

#### 3-POINT FIELD GOALS

Season - 0  
 Career - 2 at CCSU (1/10/08)

#### 3-POINT FIELD GOAL ATTEMPTS

Season - 0  
 Career - 3 at Monmouth (1/25/07)

#### FREE THROWS

Season - 2, twice  
 Career - 4 at Sacred Heart (12/9/06)

#### FREE THROW ATTEMPTS

Season - 2, twice  
 Career - 5 at Sacred Heart (12/9/06)

#### ASSISTS

Season - 2 at American (11/17)  
 Career - 2 at American (11/17/08)

#### STEALS

Season - 1 at Texas Tech (11/14)  
 Career - 2, twice

#### BLOCKED SHOTS

Season - 1, twice  
 Career - 1, six times

#### MINUTES PLAYED

Season - 33 at American (11/17)  
 Career - 33 at American (11/17/08)

### Miscellaneous

Category	2008-09	Career
Games led SFU in scoring	0	0
10+ rebound games	0	0
10+ scoring games	1	0
20+ scoring games	0	0
30+ scoring games	0	0
Double-doubles	0	0
Games led SFU in rebounds	1	0
Games led SFU in assists	0	0
Games led SFU in blocks	2	0
Games led SFU in steals	0	0

## JUKIC'S CAREER STATS

Season	G-GS	FG-A	Pct.	3PT-A	Pct.	FT-A	Pct.	Pts-Avg.	Rebs-Avg.	A	TO	BL	ST	Min
2008-09	2-1	5-20	.250	0-0	.000	4-4	1.000	14-7.0	12-6.0	2	4	2	1	53
2007-08	24-3	21-48	.438	3-10	.300	4-10	.400	49-2.0	31-1.3	5	17	1	5	211
2006-07	18-0	12-28	.429	3-9	.333	11-21	.524	38-2.1	13-0.7	4	12	3	5	116
<b>Totals</b>	<b>44-4</b>	<b>38-96</b>	<b>.396</b>	<b>6-19</b>	<b>.316</b>	<b>19-35</b>	<b>.543</b>	<b>101-2.3</b>	<b>56-1.3</b>	<b>11</b>	<b>33</b>	<b>6</b>	<b>11</b>	<b>380</b>

## JUKIC'S CAREER NORTHEAST CONFERENCE STATS

Season	G-GS	FG-A	Pct.	3PT-A	Pct.	FT-A	Pct.	Pts-Avg.	Rebs-Avg.	A	TO	BL	ST	Min
2008-09	n/a													
2007-08	15-3	16-33	.485	3-8	.375	4-9	.444	39-2.6	25-1.7	2	10	1	2	148
2006-07	12-0	7-19	.368	2-6	.333	7-12	.583	23-1.9	8-0.7	2	8	1	4	77
<b>Totals</b>	<b>27-3</b>	<b>23-52</b>	<b>.442</b>	<b>5-14</b>	<b>.357</b>	<b>11-21</b>	<b>.524</b>	<b>62-2.3</b>	<b>33-1.2</b>	<b>4</b>	<b>18</b>	<b>2</b>	<b>6</b>	<b>225</b>

#14 SORENA ORANDI



14

6-1 ♦ 180

Sophomore

Vastra Frolunda, Sweden  
(Solebury Prep)

2008-09 Notes:

► Has played a total of 9 minutes in the first two games

2007-08 Notes:

► Enjoyed a breakout game in season finale at FDU with 24 points on 9-of-17 shooting to go with 6 rebounds and a steal

Season/Career Highs

POINTS

Season - 0  
Career - 24 at FDU (3/1/08)

REBOUNDS

Season - 1 at Texas Tech (11/14)  
Career - 6 at FDU (3/1/08)

FIELD GOALS

Season - 0  
Career - 9 at FDU (3/1/08)

FIELD GOAL ATTEMPTS

Season - 4 at Texas Tech (11/14)  
Career - 17 at FDU (3/1/08)

3-POINT FIELD GOALS

Season - 0  
Career - 2 at FDU (3/1/08)

3-POINT FIELD GOAL ATTEMPTS

Season - 0  
Career - 3, twice

FREE THROWS

Season - 0  
Career - 4 at FDU (3/1/08)

FREE THROW ATTEMPTS

Season - 0  
Career - 6 at FDU (3/1/08)

ASSISTS

Season - 1 at Texas Tech (11/14)  
Career - 4 at Monmouth (2/28/08)

STEALS

Season - 1 at Texas Tech (11/14)  
Career - 1, twice

BLOCKED SHOTS

Season - 0  
Career - 0

MINUTES PLAYED

Season - 7 at Texas Tech (11/14)  
Career - 42 at FDU (3/1/08)

Miscellaneous

Category	2008-09	Career
Games led SFU in scoring	0	0
10+ rebound games	0	0
10+ scoring games	0	0
20+ scoring games	0	0
30+ scoring games	0	0
Double-doubles	0	0
Games led SFU in rebounds	0	0
Games led SFU in assists	0	0
Games led SFU in blocks	0	0
Games led SFU in steals	0	0

2008-09 ORANDI GAME-BY-GAME

Opponent	Min.	FG-A	Pct.	3FG-A	Pct.	FT-A	Pct.	O-D-TR	PF	A	TO	BS	ST	Pts
at Texas Tech (11/14)	7	0-4	.000	0-0	.000	0-0	.000	0-1-1	1	1	1	0	1	0
at American (11/17)	2	0-0	.000	0-0	.000	0-0	.000	0-0-0	0	0	0	0	0	0
DUQUESNE (11/20)														
BUCKNELL (11/22)														
at Lehigh (11/24)														
at YSU (11/29)														
at Morgan State (12/1)														
LONG ISLAND* (12/4)														
ST. FRANCIS-NY* (12/6)														
at Iona (12/14)														
at St. Bonaventure (12/17)														
at Vanderbilt (12/31)														
at Robert Morris* (1/3)														
at Sacred Heart* (1/8)														
at Quinnipiac* (1/10)														
WAGNER* (1/15)														
CCSU* (1/17)														
at FDU* (1/22)														
at St. Francis-NY* (1/24)														
MONMOUTH* (1/29)														
BRYANT (1/31)														
at CCSU* (2/5)														
at Wagner* (2/7)														
QUINNIPIAC* (2/12)														
SACRED HEART* (2/14)														
at Long Island* (2/19)														
at Mount* (2/21)														
RMU* (2/26)														
FDU* (2/28)														

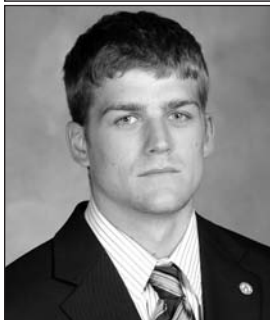
ORANDI'S CAREER STATS

Season	G-GS	FG-A	Pct.	3PT-A	Pct.	FT-A	Pct.	Pts-Avg.	Rebs-Avg.	A	TO	BL	ST	Min
2008-09	2-0	0-4	.000	0-0	.000	0-0	.000	0-0.0	1-0.5	1	1	0	1	9
2007-08	11-0	13-28	.464	3-7	.429	5-8	.625	34-3.1	11-1.0	9	2	0	1	83
<b>Totals</b>	<b>13-0</b>	<b>13-32</b>	<b>.406</b>	<b>3-7</b>	<b>.429</b>	<b>5-8</b>	<b>.625</b>	<b>34-2.6</b>	<b>12-0.9</b>	<b>10</b>	<b>3</b>	<b>0</b>	<b>2</b>	<b>92</b>

ORANDI'S CAREER NORTHEAST CONFERENCE STATS

Season	G-GS	FG-A	Pct.	3PT-A	Pct.	FT-A	Pct.	Pts-Avg.	Rebs-Avg.	A	TO	BL	ST	Min
2008-09	n/a													
2007-08	6-0	12-23	.522	3-6	.500	5-8	.625	32-5.3	11-1.8	6	0	0	1	65
<b>Totals</b>	<b>6-0</b>	<b>12-23</b>	<b>.522</b>	<b>3-6</b>	<b>.500</b>	<b>5-8</b>	<b>.625</b>	<b>32-5.3</b>	<b>11-1.8</b>	<b>6</b>	<b>0</b>	<b>0</b>	<b>1</b>	<b>65</b>

## #15 CALE NELSON



15

5-10 ♦ 180  
5th-Senior  
Newville, Pa.  
(Big Spring)

### 2008-09 Notes:

- ▶ Has a .462 field goal percentage through first two games
- ▶ Has scored eight points in each of the first two games

### 2007-08 Notes:

- ▶ Led SFU in assists, and was fourth in scoring

### Season/Career Highs

#### POINTS

Season - 8, twice  
Career - 25 vs. Youngstown St. (11/28/07)

#### REBOUNDS

Season - 3 at American (11/17)  
Career - vs. n/a

#### FIELD GOALS

Season - 3, twice  
Career - 9 vs. Youngstown St. (11/28/07)

#### FIELD GOAL ATTEMPTS

Season - 8 at Texas Tech (11/14)  
Career - 19, twice

#### 3-POINT FIELD GOALS

Season - 2, twice  
Career - 6 at American (1/2/07)

#### 3-POINT FIELD GOAL ATTEMPTS

Season - 5 at Texas Tech (11/14)  
Career - 12 vs. Lehigh (11/17/07)

#### FREE THROWS

Season - 0  
Career - 6, twice

#### FREE THROW ATTEMPTS

Season - 0  
Career - 7, twice

#### ASSISTS

Season - 2 at Texas Tech (11/14)  
Career - 9, five times

#### STEALS

Season - 1 at American (11/17)  
Career - 2, seven times

#### BLOCKED SHOTS

Season - 0  
Career - 1 vs. Slippery Rock (12/18/04)

#### MINUTES PLAYED

Season - 35 at Texas Tech (11/14)  
Career - 46 vs. SFC (1/24/08)

## 2008-09 NELSON GAME-BY-GAME

Opponent	Min.	FG-A	Pct.	3FG-A	Pct.	FT-A	Pct.	O-D-TR	PF	A	TO	BS	ST	Pts
at Texas Tech (11/14)	35	3-8	.375	2-5	.400	0-0	.000	0-2-2	1	2	3	0	0	8
at American (11/17)	28	3-5	.600	2-4	.500	0-0	.000	1-2-3	3	1	1	0	1	8
DUQUESNE (11/20)														
BUCKNELL (11/22)														
at Lehigh (11/24)														
at YSU (11/29)														
at Morgan State (12/1)														
LONG ISLAND* (12/4)														
ST. FRANCIS-NY* (12/6)														
at Iona (12/14)														
at St. Bonaventure (12/17)														
at Vanderbilt (12/31)														
at Robert Morris* (1/3)														
at Sacred Heart* (1/8)														
at Quinnipiac* (1/10)														
WAGNER* (1/15)														
CCSU* (1/17)														
at FDU* (1/22)														
at St. Francis-NY* (1/24)														
MONMOUTH* (1/29)														
BRYANT (1/31)														
at CCSU* (2/5)														
at Wagner* (2/7)														
QUINNIPAC* (2/12)														
SACRED HEART* (2/14)														
at Long Island* (2/19)														
at Mount* (2/21)														
RMU* (2/26)														
FDU* (2/28)														

### Miscellaneous

Category	2008-09	Career
Games led SFU in scoring	1	0
10+ rebound games	0	0
10+ scoring games	0	0
20+ scoring games	0	0
30+ scoring games	0	0
Double-doubles	0	0
Games led SFU in rebounds	0	0
Games led SFU in assists	1	0
Games led SFU in blocks	0	0
Games led SFU in steals	0	0

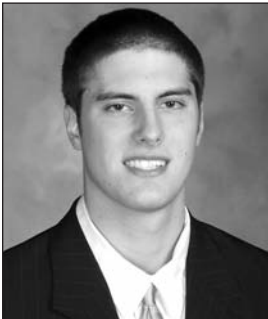
## NELSON'S CAREER STATS

Season	G-GS	FG-A	Pct.	3PT-A	Pct.	FT-A	Pct.	Pts-Avg.	Rebs-Avg.	A	TO	BL	ST	Min
2008-09	2-2	6-13	.462	4-9	.444	0-0	.000	16-8.0	5-2.5	3	4	0	1	63
2007-08	29-29	92-285	.323	57-175	.326	48-62	.774	289-10.0	50-1.7	113	95	0	16	921
2006-07	29-10	72-204	.353	46-141	.326	63-73	.863	253-8.7	60-2.1	103	67	0	13	598
2004-05	19-0	10-22	.455	4-12	.333	2-4	.500	26-1.4	11-0.6	18	13	1	4	121
<b>Totals</b>	<b>79-41</b>	<b>180-524</b>	<b>.344</b>	<b>111-337</b>	<b>.329</b>	<b>113-139</b>	<b>.813</b>	<b>584-7.4</b>	<b>126-1.6</b>	<b>237</b>	<b>179</b>	<b>1</b>	<b>34</b>	<b>1703</b>

## NELSON'S CAREER NORTHEAST CONFERENCE STATS

Season	G-GS	FG-A	Pct.	3PT-A	Pct.	FT-A	Pct.	Pts-Avg.	Rebs-Avg.	A	TO	BL	ST	Min
2008-09	n/a													
2007-08	18-18	53-169	.314	29-100	.290	28-38	.737	163-9.1	30-1.7	66	58	0	11	568
2006-07	18-5	45-121	.372	27-90	.300	41-46	.891	158-8.8	35-1.9	54	37	0	6	340
2004-05	14-0	9-16	.562	4-9	.444	0-2	.000	22-1.6	5-0.4	16	10	0	2	88
<b>Totals</b>	<b>50-23</b>	<b>107-306</b>	<b>.350</b>	<b>60-199</b>	<b>.302</b>	<b>69-86</b>	<b>.802</b>	<b>343-6.9</b>	<b>70-1.4</b>	<b>136</b>	<b>105</b>	<b>0</b>	<b>19</b>	<b>996</b>

#21 RANDY SPAID



21

6-8 ♦ 200  
Junior  
Portage, Pa.  
(Portage)

2008-09 Notes:

▶ Played 11 minutes at Texas Tech, one minute shy of his career high

2007-08 Notes:

▶ Played in six games as a sophomore, including one start

Season/Career Highs

POINTS

Season - 0  
Career - 6 vs. Lock Haven (12/15/07)

REBOUNDS

Season - 1 at Texas Tech (11/14)  
Career - 3 vs. Lock Haven 12/15/07

FIELD GOALS

Season - 0  
Career - 3 vs. Lock Haven (12/15/07)

FIELD GOAL ATTEMPTS

Season - 2 at Texas Tech (11/14)  
Career - 5 vs. Lock Haven (12/15/07)

3-POINT FIELD GOALS

Season - 0  
Career - 1 at Akron (12/19/06)

3-POINT FIELD GOAL ATTEMPTS

Season - 0  
Career - 1, four times

FREE THROWS

Season - 0  
Career - 1 vs. Lock Haven (11/18/06)

FREE THROW ATTEMPTS

Season - 0  
Career - 2, twice

ASSISTS

Season - 0  
Career - 1 at Liberty (12/4/06)

STEALS

Season - 0  
Career - 1, twice

BLOCKED SHOTS

Season - 0  
Career - 1 vs. Mount (2/23/08)

MINUTES PLAYED

Season - 11 at Texas Tech (11/14)  
Career - 12 vs. Mount (2/23/08)

Miscellaneous

Category	2008-09	Career
Games led SFU in scoring	0	0
10+ rebound games	0	0
10+ scoring games	0	0
20+ scoring games	0	0
30+ scoring games	0	0
Double-doubles	0	0
Games led SFU in rebounds	0	0
Games led SFU in assists	0	0
Games led SFU in blocks	0	0
Games led SFU in steals	0	0

2008-09 PLAYER GAME-BY-GAME

Opponent	Min.	FG-A	Pct.	3FG-A	Pct.	FT-A	Pct.	O-D-TR	PF	A	TO	BS	ST	Pts
at Texas Tech (11/14)	11	0-2	.000	0-0	.000	0-0	.000	0-1-1	2	0	1	0	0	0
at American (11/17)	2	0-0	.000	0-0	.000	0-0	.000	0-0-0	0	0	0	0	0	0
DUQUESNE (11/20)														
BUCKNELL (11/22)														
at Lehigh (11/24)														
at YSU (11/29)														
at Morgan State (12/1)														
LONG ISLAND* (12/4)														
ST. FRANCIS-NY* (12/6)														
at Iona (12/14)														
at St. Bonaventure (12/17)														
at Vanderbilt (12/31)														
at Robert Morris* (1/3)														
at Sacred Heart* (1/8)														
at Quinnipiac* (1/10)														
WAGNER* (1/15)														
CCSU* (1/17)														
at FDU* (1/22)														
at St. Francis-NY* (1/24)														
MONMOUTH* (1/29)														
BRYANT (1/31)														
at CCSU* (2/5)														
at Wagner* (2/7)														
QUINNIPIAC* (2/12)														
SACRED HEART* (2/14)														
at Long Island* (2/19)														
at Mount* (2/21)														
RMU* (2/26)														
FDU* (2/28)														

PLAYER'S CAREER STATS

Season	G-GS	FG-A	Pct.	3PT-A	Pct.	FT-A	Pct.	Pts-Avg.	Rebs-Avg.	A	TO	BL	ST	Min
2008-09	2-1	0-2	.000	0-0	.000	0-0	.000	0-0.0	1-0.5	0	1	0	0	13
2007-08	6-1	5-7	.714	1-2	.500	0-0	.000	11-1.8	6-1.0	0	0	1	0	45
2006-07	10-0	3-6	.500	1-2	.500	2-4	.500	9-0.9	1-0.1	1	1	0	2	21
<b>Totals</b>	<b>18-2</b>	<b>8-15</b>	<b>.533</b>	<b>2-4</b>	<b>.500</b>	<b>2-4</b>	<b>.500</b>	<b>20-1.1</b>	<b>8-0.4</b>	<b>1</b>	<b>2</b>	<b>1</b>	<b>2</b>	<b>79</b>

PLAYER'S CAREER NORTHEAST CONFERENCE STATS

Season	G-GS	FG-A	Pct.	3PT-A	Pct.	FT-A	Pct.	Pts-Avg.	Rebs-Avg.	A	TO	BL	ST	Min
2008-09	n/a													
2007-08	3-1	2-2	1.000	1-1	1.000	0-0	.000	5-1.7	2-0.7	0	0	1	0	28
2006-07	5-0	1-1	1.000	0-0	.000	1-2	.500	3-0.6	0-0.0	0	0	0	0	7
<b>Totals</b>	<b>8-1</b>	<b>3-3</b>	<b>1.000</b>	<b>1-1</b>	<b>1.000</b>	<b>1-2</b>	<b>.500</b>	<b>8-1.0</b>	<b>2-0.3</b>	<b>0</b>	<b>0</b>	<b>1</b>	<b>0</b>	<b>35</b>

#30 GRANT SURPRENANT



30

6-5 ♦ 180

Senior

Palatine, Ill.  
(Palatine)

2008-09 Notes:

► Has played in each of the first two games, and 21 straight

2007-08 Notes:

► Led the NEC with a .522 three-point field goal percentage

Season/Career Highs

POINTS

Season - 3 at Texas Tech (11/14)  
Career - 26 at GW (11/30/05)

REBOUNDS

Season - 1 at Texas Tech (11/14)  
Career - 6 vs. Monmouth (1/28/06)

FIELD GOALS

Season - 1 at Texas Tech (11/14)  
Career - 10 at GW (11/30/05)

FIELD GOAL ATTEMPTS

Season - 7 at Texas Tech (11/14)  
Career - 19 at GW (11/30/05)

3-POINT FIELD GOALS

Season - 1 at Texas Tech (11/14)  
Career - 6, twice

3-POINT FIELD GOAL ATTEMPTS

Season - 5 at Texas Tech (11/14)  
Career - 11 vs. Mount (1/10/06)

FREE THROWS

Season - 0  
Career - 3, two times

FREE THROW ATTEMPTS

Season - 0  
Career - 4, three times

ASSISTS

Season - 1 at American (11/17)  
Career - 3, three times

STEALS

Season - 0  
Career - 3 at SFC (2/16/06)

BLOCKED SHOTS

Season - 0  
Career - 2 at Arizona State (12/29/07)

MINUTES PLAYED

Season - 15 at Texas Tech (11/14)  
Career - 39, two times

2008-09 SURPRENANT GAME-BY-GAME

Opponent	Min.	FG-A	Pct.	3FG-A	Pct.	FT-A	Pct.	O-D-TR	PF	A	TO	BS	ST	Pts
at Texas Tech (11/14)	15	1-7	.143	1-5	.200	0-0	.000	0-1-1	1	0	0	0	0	3
at American (11/17)	5	0-1	.000	0-1	.000	0-0	.000	0-0-0	0	1	0	0	0	0
DUQUESNE (11/20)														
BUCKNELL (11/22)														
at Lehigh (11/24)														
at YSU (11/29)														
at Morgan State (12/1)														
LONG ISLAND* (12/4)														
ST. FRANCIS-NY* (12/6)														
at Iona (12/14)														
at St. Bonaventure (12/17)														
at Vanderbilt (12/31)														
at Robert Morris* (1/3)														
at Sacred Heart* (1/8)														
at Quinnipiac* (1/10)														
WAGNER* (1/15)														
CCSU* (1/17)														
at FDU* (1/22)														
at St. Francis-NY* (1/24)														
MONMOUTH* (1/29)														
BRYANT (1/31)														
at CCSU* (2/5)														
at Wagner* (2/7)														
QUINNIPAC* (2/12)														
SACRED HEART* (2/14)														
at Long Island* (2/19)														
at Mount* (2/21)														
RMU* (2/26)														
FDU* (2/28)														

Miscellaneous

Category	2008-09	Career
Games led SFU in scoring	0	0
10+ rebound games	0	0
10+ scoring games	0	0
20+ scoring games	0	0
30+ scoring games	0	0
Double-doubles	0	0
Games led SFU in rebounds	0	0
Games led SFU in assists	0	0
Games led SFU in blocks	0	0
Games led SFU in steals	0	0

SURPRENANT'S CAREER STATS

Season	G-GS	FG-A	Pct.	3PT-A	Pct.	FT-A	Pct.	Pts-Avg.	Rebs-Avg.	A	TO	BL	ST	Min
2008-09	2-0	1-8	.125	1-6	.167	0-0	.000	3-1.5	1-0.5	1	0	0	0	20
2007-08	27-0	49-95	.516	35-67	.522	6-6	1.000	139-5.1	21-0.8	12	8	3	5	356
2006-07	26-0	16-47	.340	13-36	.361	3-5	.600	48-1.8	16-0.6	0	7	2	3	176
2005-06	28-24	89-248	.359	55-159	.346	15-21	.714	248-8.9	62-2.2	27	32	2	17	736
<b>Totals</b>	<b>83-24</b>	<b>155-398</b>	<b>.390</b>	<b>104-268</b>	<b>.388</b>	<b>24-32</b>	<b>.750</b>	<b>438-5.3</b>	<b>100-1.2</b>	<b>40</b>	<b>47</b>	<b>7</b>	<b>25</b>	<b>1288</b>

SURPRENANT'S CAREER NORTHEAST CONFERENCE STATS

Season	G-GS	FG-A	Pct.	3PT-A	Pct.	FT-A	Pct.	Pts-Avg.	Rebs-Avg.	A	TO	BL	ST	Min
2008-09	n/a													
2007-08	18-0	26-55	.473	17-37	.459	2-2	1.000	71-3.9	16-0.9	5	5	0	3	227
2006-07	15-0	11-29	.379	8-22	.364	2-3	.667	32-2.1	8-0.5	0	6	2	1	100
2005-06	18-16	58-168	.345	33-108	.306	9-14	.643	158-8.8	40-2.2	15	19	1	13	495
<b>Totals</b>	<b>51-16</b>	<b>95-252</b>	<b>.377</b>	<b>58-167</b>	<b>.347</b>	<b>13-19</b>	<b>.684</b>	<b>261-5.1</b>	<b>64-1.3</b>	<b>20</b>	<b>30</b>	<b>3</b>	<b>17</b>	<b>822</b>

#33 KYLE JACKSON



2008-09 Notes:

- ▶ Had 4 points, 5 rebounds and a steal in 14 minutes at American

2007-08 Notes:

- ▶ Played in a career high 21 games for the Red Flash

33

6-3 ♦ 175

Senior

Bolingbrook, Ill.  
(Plainfield Central)

2008-09 JACKSON GAME-BY-GAME

Opponent	Min.	FG-A	Pct.	3FG-A	Pct.	FT-A	Pct.	O-D-TR	PF	A	TO	BS	ST	Pts
at Texas Tech (11/14)	13	0-1	.000	0-0	.000	0-0	.000	1-1-2	2	0	3	0	1	0
at American (11/17)	14	1-2	.500	0-0	.000	2-2	1.000	2-3-5	3	0	1	0	1	4
DUQUESNE (11/20)														
BUCKNELL (11/22)														
at Lehigh (11/24)														
at YSU (11/29)														
at Morgan State (12/1)														
LONG ISLAND* (12/4)														
ST. FRANCIS-NY* (12/6)														
at Iona (12/14)														
at St. Bonaventure (12/17)														
at Vanderbilt (12/31)														
at Robert Morris* (1/3)														
at Sacred Heart* (1/8)														
at Quinnipiac* (1/10)														
WAGNER* (1/15)														
CCSU* (1/17)														
at FDU* (1/22)														
at St. Francis-NY* (1/24)														
MONMOUTH* (1/29)														
BRYANT (1/31)														
at CCSU* (2/5)														
at Wagner* (2/7)														
QUINNIPIAC* (2/12)														
SACRED HEART* (2/14)														
at Long Island* (2/19)														
at Mount* (2/21)														
RMU* (2/26)														
FDU* (2/28)														

Season/Career Highs

POINTS

Season - 4 at American (11/17)  
Career - 7 vs. American (11/10/07)

REBOUNDS

Season - 5 at American (11/17)  
Career - 6 vs. Morgan State (11/14/07)

FIELD GOALS

Season - 1 at American (11/14)  
Career - 3 vs. American (11/10/07)

FIELD GOAL ATTEMPTS

Season - 2 at American (11/17)  
Career - 4 vs. American (11/10/07)

3-POINT FIELD GOALS

Season - 0  
Career - 1, five times

3-POINT FIELD GOAL ATTEMPTS

Season - 0  
Career - 1, seven times

FREE THROWS

Season - 2 at American (11/17)  
Career - 2, five times

FREE THROW ATTEMPTS

Season - 2 at American (11/17)  
Career - 2, 10 times

ASSISTS

Season - 0  
Career - 2 vs. Lock Haven (11/18/06)

STEALS

Season - 1, twice  
Career - 2 at Sacred Heart (12/9/06)

BLOCKED SHOTS

Season - 0  
Career - 1, twice

MINUTES PLAYED

Season - 14 at American (11/14)  
Career - 27 vs. American (11/10/07)

Miscellaneous

Category	2008-09	Career
Games led SFU in scoring	0	0
10+ rebound games	0	0
10+ scoring games	0	0
20+ scoring games	0	0
30+ scoring games	0	0
Double-doubles	0	0
Games led SFU in rebounds	0	0
Games led SFU in assists	0	0
Games led SFU in blocks	0	0
Games led SFU in steals	0	0

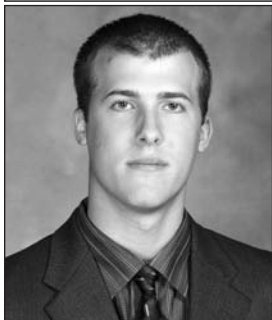
JACKSON'S CAREER STATS

Season	G-GS	FG-A	Pct.	3PT-A	Pct.	FT-A	Pct.	Pts-Avg.	Rebs-Avg.	A	TO	BL	ST	Min
2008-09	2-0	1-3	.333	0-0	.000	2-2	1.000	4-2.0	7-3.5	0	4	0	2	27
2007-08	21-2	7-17	.412	5-9	.556	8-12	.667	27-1.3	21-1.0	3	8	2	4	129
2006-07	14-0	0-5	.000	0-2	.000	4-6	.667	4-0.3	8-0.6	4	2	0	2	41
<b>Totals</b>	<b>37-2</b>	<b>8-25</b>	<b>.320</b>	<b>5-11</b>	<b>.455</b>	<b>14-20</b>	<b>.700</b>	<b>35-1.0</b>	<b>36-1.0</b>	<b>7</b>	<b>14</b>	<b>2</b>	<b>8</b>	<b>197</b>

JACKSON'S CAREER NORTHEAST CONFERENCE STATS

Season	G-GS	FG-A	Pct.	3PT-A	Pct.	FT-A	Pct.	Pts-Avg.	Rebs-Avg.	A	TO	BL	ST	Min
2008-09	n/a													
2007-08	12-1	1-4	.250	1-2	.500	4-6	.667	7-0.6	5-0.4	0	3	0	2	36
2006-07	7-0	0-1	.000	0-1	.000	4-6	.667	4-0.6	4-0.6	1	0	0	2	23
<b>Totals</b>	<b>19-1</b>	<b>1-5</b>	<b>.200</b>	<b>1-3</b>	<b>.333</b>	<b>8-12</b>	<b>.667</b>	<b>11-0.6</b>	<b>9-0.5</b>	<b>1</b>	<b>3</b>	<b>0</b>	<b>4</b>	<b>59</b>

#43 STEVE PROFETA



2008-09 Notes:

► Led the Red Flash with 8 points in only 17 minutes at American

2007-08 Notes:

► Made a career high 26 three-pointers, and shot a career-best 78.6 percent (22-of-28) from the free throw line

43

6-5 ♦ 180

Senior

Carnegie, Pa.  
(Chartiers Valley)

2008-09 PROFETA GAME-BY-GAME

Opponent	Min.	FG-A	Pct.	3FG-A	Pct.	FT-A	Pct.	O-D-TR	PF	A	TO	BS	ST	Pts
at Texas Tech (11/14)	18	0-3	.000	0-3	.000	2-2	1.000	2-1-3	3	2	2	0	0	2
at American (11/17)	17	3-5	.600	2-4	.500	0-0	.000	0-0-0	4	0	1	0	0	8
DUQUESNE (11/20)														
BUCKNELL (11/22)														
at Lehigh (11/24)														
at YSU (11/29)														
at Morgan State (12/1)														
LONG ISLAND* (12/4)														
ST. FRANCIS-NY* (12/6)														
at Iona (12/14)														
at St. Bonaventure (12/17)														
at Vanderbilt (12/31)														
at Robert Morris* (1/3)														
at Sacred Heart* (1/8)														
at Quinnipiac* (1/10)														
WAGNER* (1/15)														
CCSU* (1/17)														
at FDU* (1/22)														
at St. Francis-NY* (1/24)														
MONMOUTH* (1/29)														
BRYANT (1/31)														
at CCSU* (2/5)														
at Wagner* (2/7)														
QUINNIPAC* (2/12)														
SACRED HEART* (2/14)														
at Long Island* (2/19)														
at Mount* (2/21)														
RMU* (2/26)														
FDU* (2/28)														

Season/Career Highs

<b>POINTS</b>	
Season	- 8 at American (11/17)
Career	- 14, twice
<b>REBOUNDS</b>	
Season	- 3 at Texas Tech (11/14)
Career	- 6, twice
<b>FIELD GOALS</b>	
Season	- 3 at American (11/17)
Career	- 4, three times
<b>FIELD GOAL ATTEMPTS</b>	
Season	- 5 at American (11/17)
Career	- 8, twice
<b>3-POINT FIELD GOALS</b>	
Season	- 2 at American (11/17)
Career	- 4, twice
<b>3-POINT FIELD GOAL ATTEMPTS</b>	
Season	- 4 at American (11/17)
Career	- 7, three times
<b>FREE THROWS</b>	
Season	- 2 at Texas Tech (11/14)
Career	- 4 vs. Wagner (2/21/08)
<b>FREE THROW ATTEMPTS</b>	
Season	- 2 at Texas Tech (11/14)
Career	- 4, twice
<b>ASSISTS</b>	
Season	- 2 at Texas Tech (11/14)
Career	- 4 at Long Island (2/18/06)
<b>STEALS</b>	
Season	- 0
Career	- 2, five times
<b>BLOCKED SHOTS</b>	
Season	- 0
Career	- 2, twice
<b>MINUTES PLAYED</b>	
Season	- 18 at Texas Tech (11/14)
Career	- 34 at Long Island (2/18/06)

Miscellaneous

Category	2008-09	Career
Games led SFU in scoring	1	0
10+ rebound games	0	0
10+ scoring games	0	0
20+ scoring games	0	0
30+ scoring games	0	0
Double-doubles	0	0
Games led SFU in rebounds	0	0
Games led SFU in assists	1	0
Games led SFU in blocks	0	0
Games led SFU in steals	0	0

PROFETA'S CAREER STATS

Season	G-GS	FG-A	Pct.	3PT-A	Pct.	FT-A	Pct.	Pts-Avg.	Rebs-Avg.	A	TO	BL	ST	Min
2008-09	2-1	3-8	.375	2-7	.286	2-2	1.000	10-5.0	3-1.5	2	3	0	0	35
2007-08	27-1	35-100	.350	26-80	.325	22-28	.786	118-4.4	36-1.3	19	13	3	13	318
2006-07	22-0	6-40	.150	3-30	.100	5-9	.556	20-0.9	12-0.5	8	6	1	5	113
2005-06	27-1	35-96	.365	21-57	.368	11-17	.647	102-3.8	67-2.5	30	31	8	13	516
<b>Totals</b>	<b>78-3</b>	<b>79-244</b>	<b>.324</b>	<b>52-174</b>	<b>.299</b>	<b>40-56</b>	<b>.714</b>	<b>250-3.2</b>	<b>118-1.5</b>	<b>59</b>	<b>53</b>	<b>12</b>	<b>31</b>	<b>982</b>

PROFETA'S CAREER NORTHEAST CONFERENCE STATS

Season	G-GS	FG-A	Pct.	3PT-A	Pct.	FT-A	Pct.	Pts-Avg.	Rebs-Avg.	A	TO	BL	ST	Min
2008-09	n/a													
2007-08	17-1	23-61	.377	16-47	.340	18-23	.783	80-4.7	28-1.6	14	6	3	9	209
2006-07	15-0	2-21	.095	1-17	.059	4-7	.571	9-0.6	5-0.3	6	3	1	4	61
2005-06	18-0	33-81	.407	20-48	.417	10-15	.667	96-5.3	59-3.3	23	24	7	10	420
<b>Totals</b>	<b>50-1</b>	<b>58-163</b>	<b>.356</b>	<b>37-112</b>	<b>.330</b>	<b>32-45</b>	<b>.711</b>	<b>185-3.7</b>	<b>92-1.8</b>	<b>43</b>	<b>33</b>	<b>11</b>	<b>23</b>	<b>690</b>

#54 KURT HOFFMAN



54

6-6 ♦ 210

Junior

Johnstown, Pa.  
(Johnstown)

2008-09 Notes:

▶ Posted 8 points on 3-of-4 shooting and had 7 rebounds at American

2007-08 Notes:

▶ Hoffman's .590 field goal percentage was highest among all SFU players with more than 30 attempts

▶ Was second on the team with 12 blocks

Season/Career Highs

POINTS

Season - 8 at American (11/17)  
Career - 10 vs. Morgan State (11/14/07)

REBOUNDS

Season - 7 at American (11/17)  
Career - 8 at Penn State (11/12/07)

FIELD GOALS

Season - 3 at American (11/17)  
Career - 5 vs. Morgan State (11/14/07)

FIELD GOAL ATTEMPTS

Season - 4 at American (11/17)  
Career - 6 vs. Morgan State (11/14/07)

3-POINT FIELD GOALS

Season - 0  
Career - 1, twice

3-POINT FIELD GOAL ATTEMPTS

Season - 0  
Career - 1, four times

FREE THROWS

Season - 2 at American (11/17)  
Career - 4 vs. Long Island (2/7/08)

FREE THROW ATTEMPTS

Season - 3 at American (11/17)  
Career - 4, twice

ASSISTS

Season - 0  
Career - 4 at Duquesne (12/22/07)

STEALS

Season - 0  
Career - 2, three times

BLOCKED SHOTS

Season - 0  
Career - 2, four times

MINUTES PLAYED

Season - 24 at American (11/17)  
Career - 27 vs. Lehigh (11/17/07)

2008-09 HOFFMAN GAME-BY-GAME

Opponent	Min.	FG-A	Pct.	3FG-A	Pct.	FT-A	Pct.	O-D-TR	PF	A	TO	BS	ST	Pts
at Texas Tech (11/14)	19	0-2	.000	0-0	.000	0-0	.000	0-4-4	2	0	2	0	0	0
at American (11/17)	24	3-4	.750	0-0	.000	2-3	.667	3-4-7	2	0	2	0	0	8
DUQUESNE (11/20)														
BUCKNELL (11/22)														
at Lehigh (11/24)														
at YSU (11/29)														
at Morgan State (12/1)														
LONG ISLAND* (12/4)														
ST. FRANCIS-NY* (12/6)														
at Iona (12/14)														
at St. Bonaventure (12/17)														
at Vanderbilt (12/31)														
at Robert Morris* (1/3)														
at Sacred Heart* (1/8)														
at Quinnipiac* (1/10)														
WAGNER* (1/15)														
CCSU* (1/17)														
at FDU* (1/22)														
at St. Francis-NY* (1/24)														
MONMOUTH* (1/29)														
BRYANT (1/31)														
at CCSU* (2/5)														
at Wagner* (2/7)														
QUINNIPAC* (2/12)														
SACRED HEART* (2/14)														
at Long Island* (2/19)														
at Mount* (2/21)														
RMU* (2/26)														
FDU* (2/28)														

Miscellaneous

Category	2008-09	Career
Games led SFU in scoring	1	0
10+ rebound games	0	0
10+ scoring games	0	0
20+ scoring games	0	0
30+ scoring games	0	0
Double-doubles	0	0
Games led SFU in rebounds	1	0
Games led SFU in assists	0	0
Games led SFU in blocks	0	0
Games led SFU in steals	0	0

HOFFMAN'S CAREER STATS

Season	G-GS	FG-A	Pct.	3PT-A	Pct.	FT-A	Pct.	Pts-Avg.	Rebs-Avg.	A	TO	BL	ST	Min
2008-09	2-1	3-6	.500	0-0	.000	2-3	.667	8-4.0	11-5.5	0	4	0	0	43
2007-08	27-11	23-39	.590	0-0	.000	13-22	.591	59-2.2	67-2.5	17	16	12	10	364
2006-07	27-1	13-30	.433	2-4	.500	4-9	.444	32-1.2	38-1.4	5	11	3	5	259
<b>Totals</b>	<b>56-13</b>	<b>39-75</b>	<b>.520</b>	<b>2-4</b>	<b>.500</b>	<b>19-34</b>	<b>.559</b>	<b>99-1.8</b>	<b>116-2.1</b>	<b>22</b>	<b>31</b>	<b>15</b>	<b>15</b>	<b>666</b>

HOFFMAN'S CAREER NORTHEAST CONFERENCE STATS

Season	G-GS	FG-A	Pct.	3PT-A	Pct.	FT-A	Pct.	Pts-Avg.	Rebs-Avg.	A	TO	BL	ST	Min
2008-09	n/a													
2007-08	16-3	13-21	.619	0-0	.000	7-10	.700	33-2.1	25-1.6	4	10	2	5	182
2006-07	17-1	10-20	.500	1-2	.500	3-7	.429	24-1.4	24-1.4	4	6	3	3	179
<b>Totals</b>	<b>33-4</b>	<b>23-41</b>	<b>.561</b>	<b>1-2</b>	<b>.500</b>	<b>10-17</b>	<b>.588</b>	<b>57-1.7</b>	<b>49-1.5</b>	<b>8</b>	<b>16</b>	<b>5</b>	<b>8</b>	<b>361</b>

**2008-09 Saint Francis Men's Basketball**  
**SAINT FRANCIS Combined Team Statistics (as of Nov 19, 2008)**  
**All games**

<b>RECORD:</b>	<b>OVERALL</b>	<b>HOME</b>	<b>AWAY</b>	<b>NEUTRAL</b>
ALL GAMES	0-2	0-0	0-2	0-0
CONFERENCE	0-0	0-0	0-0	0-0
NON-CONFERENCE	0-2	0-0	0-2	0-0

#	Player	gp-gs	min	avg	Total		3-Point		F-Throw		Rebounds				pf	dq	a	to	blk	stl	pts	avg
					fg-fga	pct	3fg-fga	pct	ft-fta	pct	off	def	tot	avg								
03	FORD, Marquis	2-2	58	29.0	5-12	.417	3-6	.500	5-6	.833	2	2	4	2.0	0	0	5	5	0	4	18	9.0
15	NELSON, Cale	2-2	63	31.5	6-13	.462	4-9	.444	0-0	.000	1	4	5	2.5	4	0	3	4	0	1	16	8.0
01	SWEETNEY, Devin	2-2	57	28.5	5-23	.217	2-9	.222	4-6	.667	3	10	13	6.5	4	0	1	8	0	1	16	8.0
13	JUKIC, Mislav	2-1	53	26.5	5-20	.250	0-0	.000	4-4	1.000	4	8	12	6.0	5	0	2	4	2	1	14	7.0
43	PROFETA, Steve	2-1	35	17.5	3-8	.375	2-7	.286	2-2	1.000	2	1	3	1.5	7	0	2	3	0	0	10	5.0
54	HOFFMAN, Kurt	2-1	43	21.5	3-6	.500	0-0	.000	2-3	.667	3	8	11	5.5	4	0	0	4	0	0	8	4.0
33	JACKSON, Kyle	2-0	27	13.5	1-3	.333	0-0	.000	2-2	1.000	3	4	7	3.5	5	0	0	4	0	2	4	2.0
02	McFARLAND, Chris	2-0	22	11.0	2-4	.500	0-0	.000	0-0	.000	2	2	4	2.0	4	0	0	4	0	1	4	2.0
30	SURPRENANT, Grant	2-0	20	10.0	1-8	.125	1-6	.167	0-0	.000	0	1	1	0.5	1	0	1	0	0	0	3	1.5
14	ORANDI, Sorena	2-0	9	4.5	0-4	.000	0-0	.000	0-0	.000	0	1	1	0.5	1	0	1	1	0	1	0	0.0
21	SPAID, Randy	2-1	13	6.5	0-2	.000	0-0	.000	0-0	.000	0	1	1	0.5	2	0	0	1	0	0	0	0.0
Total.....		2	400		31-103	.301	12-37	.324	19-23	.826	22	45	67	33.5	37	0	15	38	2	11	93	46.5
Opponents.....		2	400		53-106	.500	15-37	.405	27-34	.794	15	50	65	32.5	32	-	29	24	7	18	148	74.0

<b>TEAM STATISTICS</b>	<b>SFU</b>	<b>OPP</b>	<b>Date</b>	<b>Opponent</b>	<b>Score</b>	<b>Att.</b>
SCORING	93	148	11/14/08	at Texas Tech	L 47-81	9961
Points per game	46.5	74.0	11/17/08	at American	L 46-67	2123
Scoring margin	-27.5	-	* - Conference game			
FIELD GOALS-ATT	31-103	53-106				
Field goal pct	.301	.500				
3 POINT FG-ATT	12-37	15-37				
3-point FG pct	.324	.405				
3-pt FG made per game	6.0	7.5				
FREE THROWS-ATT	19-23	27-34				
Free throw pct	.826	.794				
F-Throws made per game	9.5	13.5				
REBOUNDS	67	65				
Rebounds per game	33.5	32.5				
Rebounding margin	+1.0	-				
ASSISTS	15	29				
Assists per game	7.5	14.5				
TURNOVERS	38	24				
Turnovers per game	19.0	12.0				
Turnover margin	-7.0	-				
Assist/turnover ratio	0.4	1.2				
STEALS	11	18				
Steals per game	5.5	9.0				
BLOCKS	2	7				
Blocks per game	1.0	3.5				
ATTENDANCE	0	12084				
Home games-Avg/Game	0-0	2-6042				
Neutral site-Avg/Game	-	0-0				

<b>Score by Periods</b>	<b>1st</b>	<b>2nd</b>	<b>Totals</b>
SAINT FRANCIS	43	50	93
Opponents	74	74	148